



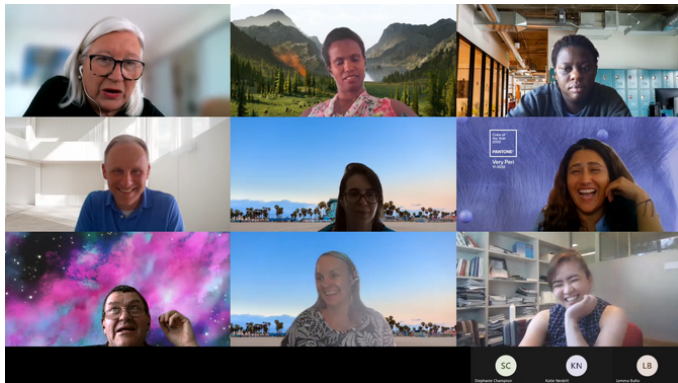
CHAP TEAM NEWSLETTER



WHATS NEW?

MORE INFO: CHAPPROJECT@FLINDERS.EDU.AU

ANNUAL PROJECT TEAM RETREAT



The CHAP team planned on getting together for a face to face retreat but due to current circumstances, ended up having a virtual retreat from 16th to 18th February. This was a great opportunity for the whole team to get together (online) to plan for the year ahead, spend time getting to know each other better and identify project deliverables and outcomes. We have a great team and look forward to seeing great results throughout the year.

IN THE SPOTLIGHT

Congratulations to Alejandra Pinero de Plaza for her presentation on our co-design and evaluation framework: PROLIFERATE during the Digital Health Institute Submit (DHIS) 2022 in Melbourne on 21st February.

PROLIFERATE is a tool used to measure the impact and usability of AI-powered technologies. It handles the complexity of evaluation and simplifies it via its new digitised testing, evaluation, and optimisation implementation.



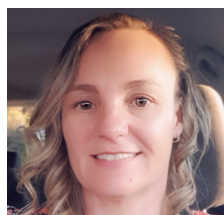
Prof Robyn Clark talks about Telehealth in a number of online videos that you can access from our partner **AstraZeneca Australia's** website at:

<https://www.azhealth.com.au/home/campaigns/hcp-education-video-on-heart-failure?ausparamname=od07022022>

The benefits of telehealth

TEAM NEWS

A warm welcome to our new team members!



Sarah Powell: Project Manager

Sarah brings a wealth of project management experience from different sectors including health, mining and tele-communications. She's been very busy in her first few weeks getting acquainted with the role, developing new systems and strategies already making a substantial contribution to the team.



Dr Joyce Ramos: Exercise Physiologist

Joyce's main research theme is 'Exercise is Medicine' in the prevention, treatment, and management of chronic diseases, with particular interest in Parkinson's disease, women's health, Type 2 diabetes, metabolic syndrome, stroke, and other neurological and metabolic disorders. Joyce is joining the team to assist with delivery of the CPD program and we look forward to having her as part of the team.

And a farewell... 🥺



After 18 months with the CHAP team as our activity guru and CPD Coordinator, **Dr Stephanie Champion** is moving on to greener pastures. Steph's cheerful disposition and amazing collection of brooches will certainly be missed. Our loss is her new team's gain to which she will be a great asset. Best wishes in your new role and don't forget to visit!

PRESENTATIONS

Our PhD Candidate Katie Nesbitt has been busy presenting her work in the past month!

- As part of the promotion of her recently accepted [paper](#) on user experience as co-design, Katie was invited to participate in a short video outlining the purpose of the project and the methodology used. The video was recorded as a short zoom interview and will be posted on Twitter by the European Journal of Cardiovascular Nursing in due course.
- Katie also presented the outcomes of the second round of roadshow workshops, testing the usability of CATCH Web at SAHMRI's Heart and Vascular Health program.

Evaluating the usability of a co-designed interactive web application for cardiac rehabilitation



DATA LINKAGE PROJECT

The data for CHAP baseline analysis and the 2016-2021 audit of the cardiac rehabilitation services are coming in March. The team is working on data management procedures and analysis planning. The remaining legal and governance agreements to allow the team to access the data have now cleared their final hurdles so it's all systems go!

PUBLICATIONS AND REVIEWS

- Beleigoli, Alline; Nicholls, Stephen J; Brown, Alex; Chew, Derek P; Beltrame, John; Maeder, Anthony; Maher, Carol; Versace, Vincent L; Hendriks, Jeroen M; Tideman, Philip; Kaambwa, Billingsley; Zeitz, Christopher; Prichard, Ivanka J; Tavella, Rosanna; Tirimacco, Rosy; Keech, Wendy; Astley, Carolyn; Govin, Kay; Nesbitt, Katie; Du, Huiyun; Champion, Stephanie; Pinero de Plaza, Maria Alejandra; Lynch, Imelda; Poulsen, Vanessa; Ludlow, Marie; Wanguhu, Ken; Meyer, Hendrika; Krollig, Ali; Gebremichael, Lemlem; Green, Chloe; Clark, Robyn A.

Implementation and prospective evaluation of the Country Heart Attack Prevention model of care to improve attendance and completion of cardiac rehabilitation for patients with cardiovascular diseases living in rural Australia: a study protocol *BMJ Open* 2022;12:e054558. doi:10.1136/bmjopen-2021-054558

The paper may be accessed [here](#)

- Astley CM, Beleigoli A, Tavella R, Hendriks J, Gallagher C, Tirimacco R, Wilson G, Barry T and Clark RA Assessing the quality of cardiac rehabilitation programs by measuring adherence to the Australian quality indicators: *BMC Health Services Research*; <https://doi.org/10.1186/s12913-022-07667-2>

The paper may be accessed [here](#)

WHAT'S ON IN MARCH?



**CONTINUAL PROFESSIONAL DEVELOPMENT SESSION:
WITH PROFESSOR ROBYN CLARK**

**TOPIC: 'MEET NURSE CORA: AVATARS AND GAMING FOR
CARDIAC PATIENT EDUCATION'**

WHEN: WEDNESDAY, MARCH 9TH

TIME: 1PM-1:45PM

WHERE: ZOOM

Ann Felder

RIVERLAND MALLEE COORONG



The CHAP project is co-funded by NHMRC Partnership Grant (GNT 1169893)